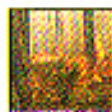




**Detour time** ▶ The level crossing on Angas Rd, Hawthorn, will be closed on Monday, November 27, for roadworks. Detours via Sussex Tce, Grange Rd, Cross Rd and Belair Rd will be in effect until 4pm next day.



**Fire safe tips** ▶ Mitcham Council has published a fire prevention leaflet as part of its community newsletter. For a copy of the guide visit Mitcham Council at 131 Belair Rd, Torrens Park.

# So far, so good for artist

By Petra Starke

SHE is still classed as an "emerging artist" in SA, but Kensington glass sculptor **Nicole Ayliffe** is gaining international recognition.

Just a few months on from completing her Visual Arts Degree at the University of South Australia, the 29-year-old has already been invited to show her work at prestigious international events.

This weekend Ayliffe is in the US city of Chicago for the *Sculpture, Object and Functional Art* exhibition (SOFA), and in February she will show at London's Victoria and Albert Museum.

The unexpected acceleration in her career has left the artist feeling a little giddy.

"I think it's sort of slightly surreal, it hasn't quite sunk in properly," she says.

"It's so exciting, you never sort of expect something like this to happen so quickly.

"You sort of think you have to be an artist for about 10 years before you get invited to any of these sorts of things."

Ayliffe's works are on show at SOFA courtesy of Sydney's Maureen Cahill's Glass Artists' Gallery, along with the work of four other Australian glass artists.



Kensington glass sculptor Nicole Ayliffe is quickly gaining international recognition for her work. 96237

She also received a \$2000 grant from the Helpmann Academy to help her travel to the show and print her own programs.

More than 31,000 people attended last year's SOFA event, with 900 expected to attend this year's opening night alone - quite a big jump for someone used to small, local exhibitions.

"It's really great of the gallery to take a chance on an emerging artist rather than taking someone who's perhaps been doing it for

10 years and has already built up a reputation," she says.

She has created a new set of works for the exhibitions based on her popular *Optical Landscapes* series - thick, clear glass orbs with photographs and patterns etched into the back.

Each piece has a distinctive Australian feel, with the wavy line patterns representing those found in rural Australia, such as vineyard rows or ploughed fields.

"I tried to focus more on the

Australian landscape in particular for this show, to represent Australia a bit more in America," she says.

While in Chicago, Ayliffe hopes to meet master Italian glass artist Lino Tagliapietra, an idol of hers who will also be showing at SOFA.

■ **Nicole Ayliffe's work is showing at Peter Walker Fine Art, 101 Walkerville Tce, Walkerville, until November 11.**

## Mitcham Cultural Hub consultation

MORE than 25 people attended a community consultation about the proposed Mitcham Village Cultural Hub on Thursday, October 11.

Mitcham CEO **Ron Malcolm** provided an overview of the council's plans to create the hub, which will include upgraded arts and craft centres, galleries and cafes.

The \$670,000 plan, for the corner of Princes Rd and Torrens St, also includes an upgrade of the old police station to become a heritage centre.

Members of the public raised questions about tree preservation, ensuring adequate storage for groups using the centre and emergency access to the Institute.

Mitcham council says to date, more than 90 per cent of respondents from the survey were in favour of the project. Consultation for the project ends on Friday, November 3.

## Migrants settle for NP&SP

PEOPLE from China, the UK, Malaysia, Sudan and India make up almost half the migrants who have settled in Norwood, Payneham & St Peters district since 2001.

The council area has welcomed 874 settlers in the past five years, with most aged 20-39.

About 60 per cent migrated under the skilled migration stream.

The 2001 Census showed almost 17 per cent of NP&SP's residents were migrants, mostly from Italy and Greece.

The figures were considered as part of a new cultural diversity policy for the council, which will promote social activities for migrants.